

Class 3 Home Learning, week beginning 27th April 2020

Maths - Year 4

Lesson 5

Dividing a number by 10

This is something you should all be able to do, as we have chatted about it many times in class.

Remember, just have a go and try your best!

w/b 27.4.20 Class 3's Home Learning, Maths (Y4)

Can I divide a number by 10?

These pages do not need to be printed out. Please write the short date you do the work and the above question in your maths book, underlining them with a ruler. Remember to write the question number too!

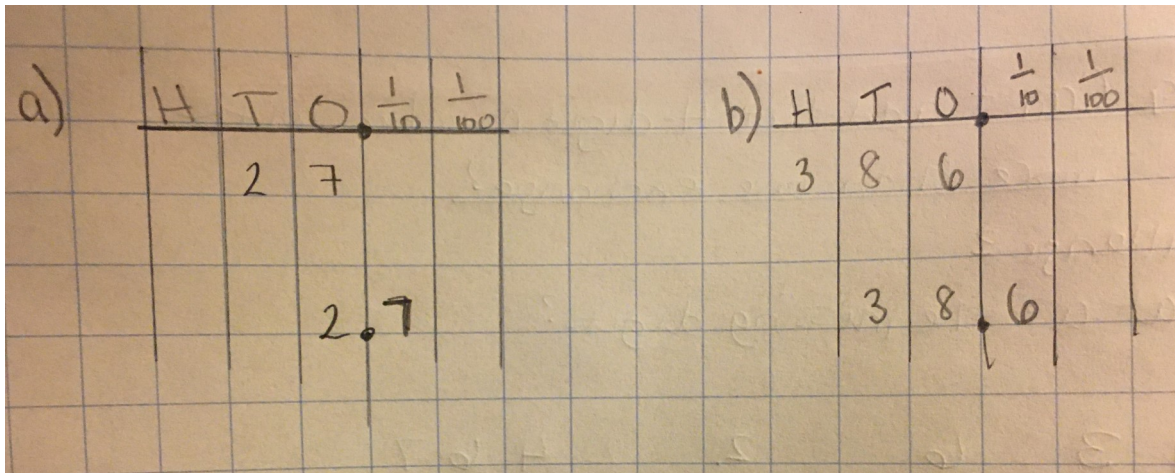
1) Copy and complete the sentences in your maths book.

Use the word bank to help you.

digits	smaller	right	
	one	tenths	$\frac{1}{10}$

- When dividing, the number becomes \_\_\_\_\_.
- When dividing, the \_\_\_\_\_ move to the \_\_\_\_\_ on a place value grid.
- On a place value grid, the first column to the right of the decimal point is the \_\_\_\_\_ column. It can also be written as \_\_\_\_\_.
- When dividing by 10, the digits only move \_\_\_\_\_ column on a place value grid.

2) Look closely at Mrs Cameron's work. Can you explain what she has done? How do you know? Have a go at writing it in your maths book.



3) Write and complete the following calculations in your maths book. Draw place value charts if you know it will help you.

a)  $4 \div 10 = \square$

d)  $9 \div 10 = \square$

b)  $2 \div 10 = \square$

e)  $\square \div 10 = 0.3$

c)  $\square = 5 \div 10$

f)  $\square \div 10 = 0.1$

4) Write and complete the following calculations in your maths book. Draw place value charts if you know it will help you.

a)  $37 \div 10 = \square$

e)  $80 \div 10 = \square$

b)  $11 \div 10 = \square$

f)  $\square = 29 \div 10$

c)  $48 \div 10 = \square$

g)  $\square \div 10 = 6.3$

d)  $99 \div 10 = \square$

h)  $3.9 = \square \div 10$

## Answers

### Question 1

- a. When dividing, the number becomes **smaller**.
- b. When dividing, the **digits** move to the **right** on a place value grid.
- c. On a place value grid, the first column to the right of the decimal point is the **tenths** column. It can also be written as

$$\frac{1}{10}$$

- d. When dividing by 10, the digits only move **one** column on a place value grid.

### Question 2

The answer could look something like this:

Mrs Cameron has divided each of the numbers by 10. I know this because the bottom number in each place value grid is smaller and each digit has moved one column to the right.

### Question 3

- a. 0.4
- b. 0.2
- c. 0.5
- d. 0.9
- e. 3
- f. 1

### Question 4

- a. 3.7
- b. 1.1
- c. 4.8
- d. 9.9
- e. 8 or 8.0
- f. 2.9
- g. 63
- h. 39