

WRENINGHAM C.E. V.C. PRIMARY SCHOOL 2016/2017 SCHOOL BROCHURE



Introduction

The Head Teacher and Governors of the school thank you for your interest and hope you find this booklet informative.

This prospectus provides information about Wreningham V.C. Primary School for new parents and others. It has four sections.

The first section describes the school organisation, its environment and the Admissions Policy. The second section outlines the relationship between parents and the school, and covers visiting arrangements and how parents can help. The third section covers the curriculum and extra-curricular activities, their aims, policies and organisation. The final section contains general information such as where to obtain more detail, the school uniform, and the procedure for making a complaint.

Contents

School organisation

School Address, Values and Vision

The School Environment

The School Day

School Meals

Attendance

Admissions

Governing Body

Teaching Staff

Friends of Wreningham School

School term dates

Parents and the School

Prior to admission or request for admission

Parent / Teacher Consultations

Ad Hoc Meetings

Other Activities

Friends of Wreningham School

Parent Governors

Ofsted

The Curriculum

Curriculum

Out of School Clubs

Musical Instrument Teaching

School Council

Safeguarding



‘Together Everyone Achieves More’

Wreningham School is committed to Safeguarding
And Promoting the Welfare of all children

Child Protection
Pastoral Care and Behaviour Policy
School Rules
Special Educational Needs
Charges for School Activities
General Information
Complaints
Additional Documents
Health and Safety
SATs results for Key Stage 1 and 2
School Uniform

The school website has the latest newsletters, diary dates, and key policies such as the Behaviour Policy that you may find useful.

School Address

Wreningham Voluntary Controlled Primary School,
Ashwellthorpe Road, Wreningham Norfolk NR16 1AW

Telephone: (01508) 489355
Fax: (01508) 489355
Email: office@wreningham.norfolk.sch.uk
Website: www.wreningham.norfolk.sch.uk
School secretary/Business Manager Mrs N Sharp
Head Teacher: Mr R Jones M.A.
Chair of Governors: Mrs C Baldwin



Vision Statement

‘Together Everyone Achieves More’

Vision Statement: We are a church school that gives children an outstanding education. Our vision is for every child to leave Wreningham Primary School having achieved the very best they can and to be happy and confident individuals that are inspired to continue their learning journey.

We welcome you as a partner in your child's education.

Values

As a school with a church foundation, Christian values of love, respect, tolerance, caring, compassion, forgiveness, underpin everything we do.

‘Together Everyone Achieves More’

Wreningham School is committed to Safeguarding
And Promoting the Welfare of all children

We endeavour to inspire children with the highest quality teaching;
We believe learning should be fun, purposeful and challenging. We want children to flourish in our school – to build upon and develop individual strengths and talents;
We have a culture in which the pupils’ achievements and successes are celebrated;
We support our pupils to be creative, independent learners and thinkers;
We nurture and encourage the pupils and have happy children who feel safe in their school;
The school has a broad-based and dynamic curriculum, with an enriching programme of extra-curricular activities and educational visits. We aim to promote sustainability and an awareness of ECO and global issues;
We value the contribution the children make to the life of our school and have a School Council and an Eco Council;
We believe good teamwork and positive partnerships with individual children, the whole class, our colleagues, with governors, parents and the wider community, leads to effective teaching, high standards and successful learning;
We have positive dispositions – with laughter and happiness in our school;
We continue to develop our deep understanding of children and their learning;

The School Environment

The school serves three villages – Wreningham, Ashwellthorpe and Fundenhall, which are situated approximately 4 miles south east of Wymondham. Wymondham is a thriving market town with a wide range of shops and leisure activities and has good links to Norwich and other parts of Norfolk. The high school in Wymondham has an excellent reputation and all children living in our catchment area are entitled to a place when they move to High School.

The three villages are part of the Upper Tas Valley Benefice that includes 6 Parishes - Ashwellthorpe, The Forncetts (Forncett End, Forncett St. Mary and St. Peter) Fundenhall, Hapton, Tacolneston and Wreningham. Wreningham, Ashwellthorpe and Fundenhall have some joint facilities such as the school, the playgroup and a social club. Each village has a good pub; Wreningham and Ashwellthorpe have village halls.

The school is a Church of England Voluntary Controlled School because all rural schools were originally provided by the Church. Some still have very close ties with the church, depending on the diocese for some of their funding. We have a good relationship with the local parish. We follow the education department’s guidelines for teaching Religious Education and for Assemblies which are of a mainly Christian nature.

We have four classes at present and feel that we are the perfect size for most children. Currently there are slightly more than 100 children in the school.

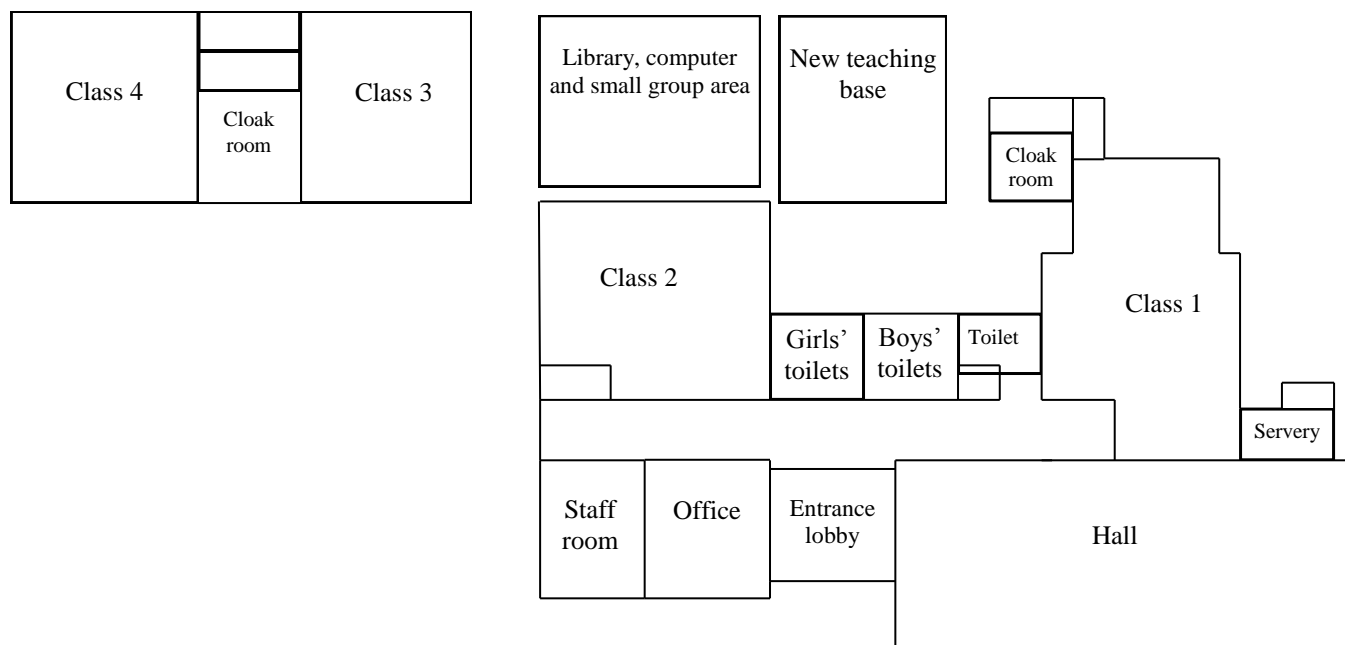
The original school buildings are Victorian and in good condition. The main school has been extended though the Key Stage 2 children remain in mobiles. In 2011 we completed a building project to re-design the outdoor learning environment for the Early Years Foundation Stage,

‘Together Everyone Achieves More’

Wreningham School is committed to Safeguarding
And Promoting the Welfare of all children

ensuring it is richly resourced with exciting play materials for our youngest children. This was opened by the Bishop of Thetford. In 2013 we completed a new teaching base adjacent to the main school building which we believe will be an invaluable additional space. We use the playing fields and the local area to extend learning opportunities for all the children.

We believe that our small school, in a safe environment, where each child can be an individual, is the best possible start to a child’s education.



The School Day

We ask that pupils arrive no earlier than 8.35am, when the classroom supervision starts, and no later than 8.50 am to ensure that they are registered as present.

- | | |
|-----------|--|
| 8.35-8.50 | School opens - Children dropped off |
| 8.50 | Morning register in classrooms. Two morning sessions, including assembly and a playtime from 10.35 – 10.50 |
| 12.00 | Reception, Year 1 and Year 2 dinner time begins |
| 12.10 | Year 3, 4, 5 and 6 dinner time begins |
| 1.15 | Afternoon session begins |
| 3.10 | End of the school day |



‘Together Everyone Achieves More’

Wreningham School is committed to Safeguarding
And Promoting the Welfare of all children

School Meals

All children may choose to use the School Meals Service provided by Norfolk County Services. Hot meals are served from the kitchen in the school hall and are provided by Ashleigh Infant School in Wymondham. All pupils in Reception, Year 1 and Year 2 are entitled to a free school meal each day - **Universal Infant Free School Meals**.



Pupils in Key Stage 2 are charged - A main course and dessert costs £2.10/day or £10.50/week. This needs to be ordered and paid for on a Monday, with the days that your child wishes to have a school meal for that week. Menus are distributed each term. Vegetarian or specialist diets can be accommodated.

Alternatively, children can bring their own packed lunch or go home - currently all pupils remain at school for lunch. Packed lunches should be brought in a named lunchbox. For safety's sake, we ask that no glassware, breakable flasks, tins or hot drinks be included in packed lunches.

Sweets are not allowed. All hot meals are eaten in the dining room together with packed lunches. On sunny days, packed lunches may be eaten on the picnic tables outside under the supervision of the Midday Supervising Assistants.

Families of pupils in Key Stage 2 in receipt of some benefits may be entitled to **Free School Meal** - please talk to Mrs Sharp in the office.

Attendance

The pupils' high motivation is reflected in our **outstanding attendance record**. If your child is unwell, please inform the school office on the first day of sickness. The school operates '**first day calling**' and will contact the parents of any children who have not attended school, and for whom the school has not been notified of their being absent, soon after 9 a.m. We do ask that, if a child has been physically sick, he/she be kept at home for a period of **48 hours**, to prevent the spreading of infections.

Holidays in school time - Every lesson Counts!

The Government has amended regulations to schools greatly restricting the discretion a Headteacher has to grant leave of absence during term time. **This means Headteachers can no longer authorise leave of absence for the purpose of a family holiday unless there are exceptional circumstances.** If parents want to make an application, an absence request form

must be completed - the form is available from the school office. Holidays in term time will be treated as unauthorised unless in exceptional circumstances.

The school’s Attendance Policy is found on its website.

Admissions

Wreningham Primary School follows the Norfolk County Council Admissions Policy. Details and Admission forms can be found on their website: www.admissions@norfolk.gov.uk

Children resident in Wreningham, Ashwellthorpe and Fundenhall have the right of admission to the school, but under the terms of the 1988 Education Act, children may be admitted from outside parishes under certain circumstances e.g. if numbers permit and parents undertake responsibility for transport.

Over subscription rules for first admissions.

If there are more applications for places than there are available, we will give preference to children living nearest to the school, according to the following rules in this order of priority:

1. children with statement of special educational needs naming the school.
2. children in public care who are due to start school
3. children who are due to start school, living in the area served by the school who have a brother or sister attending the school at the time of their admission
4. children who are due to start school, living outside the area served by the school who have a brother or sister attending the school at the time of their admission

If all children within any of the above rules cannot be offered a place, the highest priority will be given to children living nearest, distance will be measured on a straight line ‘crow fly’ basis, using Ordnance Survey data. The address will be measured from the post office address point on the property.

Children transferring to the school after first admissions.

If you have moved to the area a place can only be offered in the school if there is one free in your child’s age group.

When can a child start primary school? By law, all children in the UK must receive a full-time education when they reach statutory school age i.e. starting in the term after their fifth birthday. The school offers admission in September to all children on a part-time or full-time basis for those children who become five during that academic year.

‘Together Everyone Achieves More’

Wreningham School is committed to Safeguarding
And Promoting the Welfare of all children

Although most children start full time straight away, we are a small school and work in close partnership with parents - we take the needs of each individual child into account when deciding whether children start full time or part time.

Children under five should be registered at the school as early as possible, but a firm offer of a place cannot be given until the Summer Term.

Governing Body

The main aim of the governing body is to maintain and improve its school's standards of education. This includes:

- monitoring and evaluating school performance, acting as a critical friend to the Headteacher to support and challenge them in managing the school
- ensuring the school is accountable to its children and their parents, to its local community, to those who fund and maintain it, and to the staff it employs
- setting the school's vision and strategic aims, agreeing plans and policies, and making creative use of resources

The Governing Body is made up of two committees - the Raising Standards Committee and the Operational Committee. The Raising Standards Committee is responsible for the curriculum; Pupil attainment and data analysis; Parent and community partnerships; And Special Education Needs and Disability [SEND]. The Operational Committee is responsible for the Finance; Personnel; Premises; And Health & Safety.

In September 2014 the Governing Body was re-constituted. The constitution of the governing body now comprises 2 elected parents of pupils in the school; An elected member of the teaching staff; The Headteacher; A representative of the Local Education Authority; And 2 Foundation governors (one is the Bishop's Representative). We also have up to 4 co-opted governors, co-opted for their particular skills, interests or associations with the school.

Each member of the Governing Body serves on one the committees with responsibilities concerning particular areas of school life. Each committee includes either the Head Teacher or the Senior Teacher, and is chaired and minuted by a governor. Governors, especially parent governors who are your elected representatives, are always willing to listen to you.

<u>Name</u>	<u>Type of Appointment</u>
Mrs Russell	Parent Governor
Mrs M Osborn	Parent Governor
Ms J Leader	Teaching Staff Governor
Mr R Jones	Head Teacher
Mrs M Fairman	LEA Governor
Mr J Gent (Chairperson)	Co-opted Governor
Mr A Thompson	Co-opted Governor
Vacancy	Co-opted Governor

‘Together Everyone Achieves More’

Wreningham School is committed to Safeguarding
And Promoting the Welfare of all children

Vacancy
Mr A Cook
Vacancy
Jacqueline Humphries

Co-opted Governor
Foundation Governor (Bishops Representative)
Foundation Governor
Clerk to the Governors

Teaching Staff



Mr Jones – Head Teacher



Mrs Sharp – Secretary



Mr Hodge – Class 4 Teacher



Ms Leader – Class 1 Teacher



Mrs Tarry – Class 3 Teacher



Mrs Furness – Class 2 Teacher



Mrs Thompson - Class 3 Teacher

Teaching Assistants

The school has a highly successful team of Teaching Assistants who work under the direction of the teachers to help promote effective learning and teaching.

Janet Roberts/Sally Harris/Lynsey Watkins	Class 1	Catherine Gribb	Class 1
Julie Foulger	Class 2	Kathy Rees	Class 3/4
Colleen Cameron	Class 1/3/4	Kelly Cripps Wells	Class 1/4

Friends of Wreningham Officers FOWS

The FOWS is the school’s PTA. It has been excellent at raising funds to support the school, organising social events for the children and parents, providing support for school trips and other special events. It is a very friendly committee and is always keen to welcome new parents (the section Parents and the School has further information).

Claire Walsh/Catherine Reynolds Chairperson

Wymondham Cluster

The school is part of the Wymondham Primary Cluster comprising ten schools in and around the Wymondham area. The cluster is committed to working together to provide a full and effective education to all its pupils. The cluster has a vision that includes a collaborative focus on raising standards and the development of a wider entitlement of experiences for all pupils.

Ashleigh Primary and Nursery School; Barford Primary School; Barnham Broom C of E VA Primary School; Browick Road Primary School; Morley C of E VA Primary School; Robert Kett Primary School; Spooner Row Primary School; Tacolneston C of E Primary School; Wicklewood Primary School; Wreningham VA Primary School.

We partner with both Wymondham High Academy Trust and Wymondham College in our provision for pupils with Special Educational Needs, details of which can be seen below. The Primary Cluster is managed by the cluster Head Teachers and monitored by cluster Governors. Head Teachers meet every half term with input from the Extended Schools Coordinator, the Pastoral Care Manager and other partners as necessary.

‘Together Everyone Achieves More’

Wrenningham School is committed to Safeguarding
And Promoting the Welfare of all children

School Term dates – 2016/17

September 2016							October 2016							November 2016							December 2016						
M	T	W	T	F	S	S	M	T	W	T	F	S	S	M	T	W	T	F	S	S	M	T	W	T	F	S	S
				1	2	3	4					1	2		1	2	3	4	5	6				1	2	3	4
5	6	7	8	9	10	11	3	4	5	6	7	8	9	7	8	9	10	11	12	13	5	6	7	8	9	10	11
12	13	14	15	16	17	18	10	11	12	13	14	15	16	14	15	16	17	18	19	20	12	13	14	15	16	17	18
19	20	21	22	23	24	25	17	18	19	20	21	22	23	21	22	23	24	25	26	27	19	20	21	22	23	24	25
26	27	28	29	30			24	25	26	27	28	29	30	28	29	30					26	27	28	29	30	31	
							31																				

January 2017							February 2017							March 2017							April 2017						
M	T	W	T	F	S	S	M	T	W	T	F	S	S	M	T	W	T	F	S	S	M	T	W	T	F	S	S
						1			1	2	3	4	5			1	2	3	4	5						1	2
2	3	4	5	6	7	8	6	7	8	9	10	11	12	6	7	8	9	10	11	12	3	4	5	6	7	8	9
9	10	11	12	13	14	15	13	14	15	16	17	18	19	13	14	15	16	17	18	19	10	11	12	13	14	15	16
16	17	18	19	20	21	22	20	21	22	23	24	25	26	20	21	22	23	24	25	26	17	18	19	20	21	22	23
23	24	25	26	27	28	29	27	28						27	28	29	30	31			24	25	26	27	28	29	30
30	31																										

May 2017							June 2017							July 2017							August 2017							
M	T	W	T	F	S	S	M	T	W	T	F	S	S	M	T	W	T	F	S	S	M	T	W	T	F	S	S	
1	2	3	4	5	6	7				1	2	3	4						1	2			1	2	3	4	5	6
8	9	10	11	12	13	14	5	6	7	8	9	10	11	3	4	5	6	7	8	9	7	8	9	10	11	12	13	
15	16	17	18	19	20	21	12	13	14	15	16	17	18	10	11	12	13	14	15	16	14	15	16	17	18	19	20	
22	23	24	25	26	27	28	19	20	21	22	23	24	25	17	18	19	20	21	22	23	21	22	23	24	25	26	27	
29	30	31					26	27	28	29	30			24	25	26	27	28	29	30	28	29	30	31				
														31														

White dates - school open to pupils

Yellow dates - pupil holiday

Red dates - bank holiday

This information is available on Norfolk County website.

School term and holiday dates are determined in accordance with the legal requirement, which require that there should be 190 pupil days.

Staff Development Days

Staff training days on 1/2 September and 4 January. Other training days will be done as twilight sessions.

Parents and the School

Prior to admission or request for admission

The Head Teacher is always happy to show prospective parents around the school. Please telephone the secretary to arrange an appointment.

During the Summer Term a programme of induction is organised for children who will begin in the Reception class in the Autumn Term. This consists of a visit by the Reception Teacher and

‘Together Everyone Achieves More’

Wreningham School is committed to Safeguarding
And Promoting the Welfare of all children

Teaching Assistant, to Bramble Bears, the local playgroup, and other nurseries. This is then followed by four afternoons in your child’s new classroom to experience some of the activities they will be doing.

Parent / Teacher Consultations

We aim to foster strong home/school links between parents, teachers and children. The teachers are happy to see parents at any reasonable time during the school year. Each term opportunities are provided for parents to meet with their child’s class teacher to discuss progress. At the end of the summer term all parents receive an annual report on their child’s progress.

Ad Hoc Meetings

It is our policy that if either the parent or the class teacher has a particular worry or concern about a child’s progress or attitude, this should be discussed as soon as possible. Parents are invited to make an appointment with the class teacher at any time during the school year.

Other Activities

During the school year there will be opportunities for parents to come into school to share sports days, entertainments, achievement assemblies and general school activities. ‘Stay and Play’ in class 1- this is an opportunity for parents with children in class 1 to stay and take part in activities with their child and discover more about the approach to learning taken in the Early Years Foundation Stage! ‘Stay and Play’ is the last Thursday in each month.

Friends of Wreningham School (FOWS)

The school is lucky to have a thriving Friends Committee which exists to:

- develop relationships between staff, parents and others associated with the school;
- engage in activities which support the school and the education of the children attending it;
- assist in the provision of items for education (either through subsidising trips or buying equipment) not provided through statutory funds.

New parents are more than welcome to join in the fun.



Parent Governors

The Parent Governors are elected by parents to be a ‘parent’s voice’ on the Governing Body. They are always willing to listen to parents’ views, and represent these views with the Governors. Contact can be made through the school office.

Ofsted 8-9 July 2015

The school was graded Outstanding in all areas

Leadership and Management	Outstanding
Behaviour and safety of pupils	Outstanding
Quality of teaching	Outstanding
Achievement of pupils	Outstanding
Early Years provision	Outstanding



‘This is an outstanding school’

- ‘School leaders have a relentless focus on promoting improvement. As a result standards in teaching and achievement are outstanding.’
- ‘Wreningham lives up to its motto encouraging all to work as a team: Together Everyone Achieves More: ‘Teamwork is a strength of the school. All staff have high ambitions for the pupils and work well together to make sure all pupils succeed.’
- ‘Pupils’ behaviour around the school and in lessons is impeccable. They are enthusiastic about their learning and are proud of their work.’
- ‘The early years provision is outstanding. Children make an excellent start to their education due to outstanding teaching that interests and excites them.’
- Teaching is outstanding because teachers have high expectations of all pupils. They plan activities that enthuse the pupils and make them think hard and persevere with their learning.
- Pupils feel exceptionally safe and secure within the school. They are knowledgeable about keeping themselves safe in a variety of situations.
- The curriculum is outstanding as pupils study a range of subjects through stimulating topics. It provides exceptionally well for their spiritual, moral, social and cultural education.



Extract from OFSTED. The full report can be found on the school website.



Church OFSTED report November 2014

The distinctiveness and effectiveness of Wreningham VC as a Church of England school are outstanding

The school, through its distinctive Christian character, is outstanding at meeting the needs of all learners

The impact of collective worship on the school community is good

The effectiveness of the leadership and management of the school as a church school is outstanding

- This is a very happy, inclusive and successful environment where the work of the school is built upon clearly articulated Christian values which are understood and valued by all
- The school offers an exciting, engaging curriculum which is concerned with encouraging the children to value God's gifts and understand themselves as custodians of these
- Religious Education (RE) is well led, taught creatively and given a high status within the school, enabling pupils to apply their skills and knowledge in their own context.

Extract from Church OFSTED

The Curriculum

The children are at the heart of our curriculum. We have a curriculum which is enriched and inspiring, one that offers many opportunities beyond the classroom to all our pupils. We believe that every child should have the opportunity to develop and build their confidence and self-esteem.

We encourage our children to have high aspirations and strive for the best.

Over the last two years we have been developing the curriculum that we provide for our children. Our main aim is to provide exciting, stimulating topics which the children become fully absorbed in using a cross-curricular approach. We encompass many curriculum subjects into each topic, making them relevant and meaningful for our children. We use a number of different approaches to explore and deliver the topics to ensure we enable our children to develop all the skills they need to be confident and successful learners. **We want our children to be inquisitive and passionate about their learning and spark a desire for life long learning.**

‘Together Everyone Achieves More’

Wreningham School is committed to Safeguarding
And Promoting the Welfare of all children

The subjects taught by the school are directed by the National Curriculum supported by the Literacy and Numeracy Strategies. The subjects taught in school are the core ones: English, Maths, Science and RE; and the foundation subjects: ICT, History, Geography, Design Technology, Music, Art, PE and Personal Social and Health Education. Children also have at least one session of a Foreign Language a week - French or Spanish. From Year 2 children are able to have instrumental tuition from visiting musicians – this includes guitar, violin, clarinet, bassoon and flute.

The curriculum is divided into 3 key stages:

Early Years Foundation Stage for 4 to 5 year olds which continues work begun in pre-school;

Key Stage 1 for 5, 6 & 7 year olds (Years 1 and 2);

Key Stage 2 for 7 to 11 year olds (Years 3 and 6).

At the end of Key stages 1 & 2 children complete statutory national tests in English (Reading, Writing and Grammar) and Maths. The results of last year’s tests (2015) are published in this brochure.

Collective worship takes place every day in school. The aim is to develop pupil’s awareness of themselves, others, the world around us and religious and spiritual experiences. The emphasis is on the Christian faith.

The school has laptops in each classroom as well as desk top computers. We also have desktop computers in the library and we have increased our ICT capacity further, turning part of this space into an ICT suite.

We enrich children’s learning outside the school context, with two overnight residential trips taking place in each class in Key Stage 2. Previous trips have been to Holt Hall, Brancaster, Wells and Horstead.

Weekly swimming lessons also take place for groups of 20 children during Key Stage 2.

Out of School Clubs

There is a range of after school and lunchtime activities available. These change according to season and available personnel. Currently the clubs include: Sports Club; Computer club; Dance/Keep Fit club; Eco Club; Art Club; Sewing Club.

Some of the activities are run by visiting professionals and charges may be payable.



Musical Instrument Teaching

All children in Year 3 are taught to play the recorder and begin to read music. Many continue this in out-of lesson time clubs as they get older.

We have visiting teachers for guitars, woodwind and keyboard who teach children in small groups. There is a charge for the lessons and children must provide their own instrument or hire one from the music service. Instrument tuition is open to children in Year 3 and older.

School Council including Eco Council

We believe that children’s views should be represented in school. The School Council helps children to have a greater say in matters that affect the school which encourages a sense of ownership and pride in their school. Each year elected children form a school council to discuss and share their ideas, and to make decisions regarding whole school issues and fundraising ideas. The council is then responsible for spending any money raised efficiently and effectively on what they feel is important.

Recent events organised by the school council include a didgeridoo day! The school council also sponsor two endangered animals, an orang-utan and a leopard, as well as raising money for local charities.

Safeguarding

Child Protection

Our school is committed to promoting the health and welfare of all pupils. The school has a **whole school policy for safeguarding** that incorporates child protection, and this is updated regularly. We are required by law to follow the procedures laid down by the Norfolk Local Safeguarding Children Board if we see signs which suggest that one of our pupils may have been a victim of abuse.

All visitors to school are required to wear an identity tag and all unsupervised parent volunteers in school must be CRB checked.

Pastoral Care and Behaviour Policy

The school is committed to providing an environment where the pupils feel safe and happy. Staff work closely with parents and pupils to optimise the chances of every pupil succeeding. Pastoral care is the responsibility of the class teacher and also the senior staff, although all staff play an active role in supporting children. We want children to feel comfortable approaching all members of staff if they need help.

Bullying of any kind is unacceptable at our school. If bullying does occur, all pupils should be able to tell and know that incidents will be dealt with promptly and effectively. We are a **TELLING** school. This means that *anyone* who knows that bullying is happening is expected

‘Together Everyone Achieves More’

Wreningham School is committed to Safeguarding
And Promoting the Welfare of all children

to tell the staff. Parents will be consulted whenever their co-operation or intervention is thought beneficial to the situation in hand, or if a serious situation arises.

A copy of the school behaviour policy is available in school.

School Rules

For full details please see the school’s behaviour policy. **The Seven Bees of Behaviour:**

Be Ambitious (Do your best; Challenge Yourself; Aspire to Greatness)

Be Focused (Work Hard; Show Resilience)

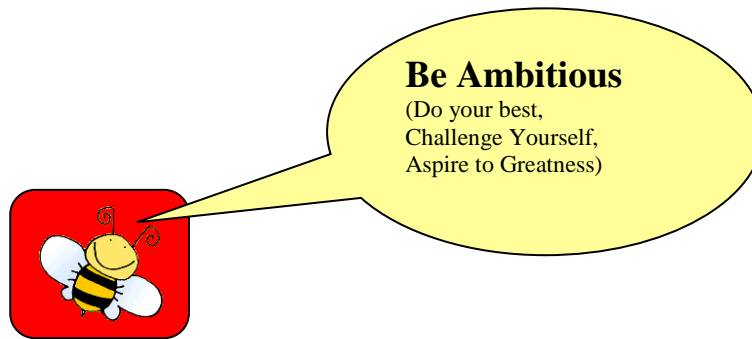
Be a Team Player (Respect Others; Be Caring of Their Feelings)

Be Tidy (Take care of your books and equipment and the school grounds)

Be Friendly (Forgive Others; Don’t be unkind or Hurtful)

Be Polite (Show Respect; Don’t be rude or interrupt)

Be Truthful & Honest (Don’t tell lies or Keep a bad secret)



(The full poster is in school)

House Points

The school has four houses; Yellowhammers, Robins, Kingfishers and Greenfinches. All children are allocated a House and Year 6 pupils are nominated as House Captains. House points are awarded for good work, kindness to others, being a good friend, listening in class. The points are posted in a bird box by the children! House Captains announce the house which has received the most points in the Friday assembly. One house each week awards the year group that received the most house points with a certificate.

Each half-term, a certificate is awarded to the individuals who have received the most house points in each house. This is presented in an assembly – the parents are invited in. A trophy is presented to the winning house.

When pupils earn 50 house points they are presented with a bronze badge; 100 house points a silver badge; 200 house points a gold badge.

Special Educational Needs

Our Approach to Teaching Learners with SEN

Wreningham VC Primary is committed to providing a full and effective education to all pupils and embraces the concept of equal opportunities for all - Learning for all.

The school’s approach to teaching learners with SEN:

- Develop a culture of inclusion valuing high quality teaching for all learners with teachers using a range of effective differentiation methods.
- Monitor the progress of all learners and continually assess pupils ensuring that learning is taking place. Pupil progress meeting are held at least termly.
- Employ a collaborative approach with learners with SEN or disability, their families, cluster schools and other local authority professionals.
- Set appropriate individual targets based on prior achievement, high aspirations and the views of the learner and the family.
- Make efficient and effective use of school and cluster resources
- Have regard to the Code of Practice (2014) for the identification, assessment, support and review of SEN.
- Adhere to the requirements of the Equality Act (2010) and the Children & Families Act (2014)

If a learner is identified as having SEN, we will provide support that is ‘**additional to**’ or ‘**different from**’ the differentiated approaches and learning arrangements normally provided as part of high quality, personalised teaching intended to overcome the barrier to their learning. Special educational needs and provision is categorised under four areas:

- Communication and interaction
- Cognition and learning
- Social, mental and emotional health
- Sensory and/or physical

The school has a published **SEN Information Report** that is available on its website.

Charges for school activities

Educational Visits and Voluntary Contributions

To enrich the curriculum and help children to make connections between their learning in the classroom and the world beyond, the school widely uses local resources and sometimes those further afield.

Where there are costs involved in educational visits or other special activities, parents may be requested to make a **voluntary contribution** to cover these. As the school has a limited budget to subsidise costs, an event or activity may be cancelled where insufficient contributions are made. If a trip goes ahead, it may include children whose parents have not paid any contribution. We do not treat these children differently from any others.

Any family who may have difficulty meeting the full contribution requested should contact the Headteacher, in confidence, to discuss how the school may be able to help.

1. Day trips and Entertainments/activities in school

The whole class or group will participate. Contributions are voluntary to cover the costs;

2. Ingredients and materials needed for practical subjects

Parents may be notified when the class will be involved in a practical activity requiring costly materials. Contributions are voluntary to cover the costs;

3. Travel

Parents will *not* be asked to contribute to the cost of travel to regular activities such as swimming, which form part of the curriculum. You may, however, be asked to contribute if your child takes part in a special activity or function, such as a sports match, off site.

4. Residential Trips

The residential trips currently organised by the school are the type deemed under regulations to take place mainly within school hours. Board and lodging will be charged for, except for families in receipt of Income Support or Working Families Tax Credit who should make a special application in confidence to the Head Teacher.

The cost of travel, entrance fees, educational activities, insurance and staff expenses will be covered by inviting voluntary contributions.

Activities outside school hours

These activities are optional. Parents will be asked to agree the child's participation in advance; a charge will be made to cover all costs involved for the individual child.

General Information

Complaints

If you are unhappy about any aspect of your child's education or experience at school you should make an appointment to see the class teacher.

‘Together Everyone Achieves More’

Wreningham School is committed to Safeguarding
And Promoting the Welfare of all children

We would hope that discussing the matter with the teacher should be enough to resolve the problem. However, if you are still unhappy and wish to take the matter further you should make an appointment to see the Head Teacher. If after discussion with the Head Teacher the matter remains unresolved you will be given a copy of the complaints procedure so that you can make a formal complaint.

Additional Documents

Many documents can be found on the school website under the school tab;
<http://www.wreningham.norfolk.sch.uk/school.html>. This includes: A Behaviour policy; A Safeguarding policy; The Home school Agreement; A Calculations policy; And the School Brochure. A **newsletter** is produced regularly with general information and includes a school calendar.

Available for Reference

The school also holds as reference many documents which can be viewed during normal school hours by appointment with the School Secretary. Photocopies of documents can be made at a small cost. Documents held cover curriculum information, policies and procedures.

Health and Safety

The school has a general Health and Safety Policy which is reviewed and updated regularly. The policy covers pupils, staff and all visitors to the school. There is an annual safety inspection of all school buildings and electrical and gas appliances are tested regularly.

SATs Results 2016

KS1/2016

15 Pupils	%Expected standard School	Cluster Average	National	%Greater Depth School	Cluster Average	National
Reading	79	76	74	21	27	24
Writing	71	74	65	21	17	13
Maths	79	76	73	43	22	18

KS2/2016

16 Pupils	KS2 %Expected Standard +	Cluster Average	National	KS2 %Higher standard/ Greater Depth	Cluster Average	Nat
Reading	80	75	66	40	30	19
WritingTA	73	76	74	20	21	15
Maths	87	71	70	27	15	17
GP&S	73	74	72	20	27	23

KS2 GP&S - Grammar Punctuation and Spelling

School Uniform

It is our school policy that **all** children wear school uniform when attending school or when participating in a school organised event outside normal school hours.

It is based on the belief that school uniform promotes a sense of pride and belonging towards the school and community.

The school has a uniform based on combinations of red, dark grey and white. Parents are requested to ensure that, as far as possible, children’s dress conforms to the suggestions below. All items are available from several stores in Norwich. School sweatshirts, fleeces and book bags are available from school.

Girls

Dark grey - skirt / pinafore dress or tailored trousers

White - polo shirt or blouse

Red tights, or white socks

Red chequered - summer dress

Red - v-neck jumper or red cardigan

Boys

Dark grey - trousers

White - polo shirt (or white shirt)

Red - v neck jumper

Grey socks

Dark grey – shorts (summer)

Sensible black shoes should be worn – NOT trainers

Performa 50 Pullover
from £13.50 with Logo



Performa 50 Cardigan
from £14.00 with Logo

Classic Polo Shirt from
£6.40 with Logo



You can buy the uniform online - search ‘Gooddies Wreningham.’

<http://wreningham.gooddies.co.uk/>

You can buy a red cardigan/jumper without the school logo from Tesco/Sainsbury

For PE

White T-shirt and black shorts.

Reception, Year 1 and Year 2 require plimsolls in a shoe bag, and Years 3 – 6 require trainers for outside use. The same footwear should not be used inside and out. Children who are keen on playing football on the field will need to change into trainers.

Swimming (where applicable)

Sensible costume or trunks, swimming hat and towel.

Other items

A bag for carrying books etc. Painting shirt or apron if requested by the teacher.

All items should be clearly named. Jewellery should NOT be worn. For pierced ears simple studs or sleepers only may be worn.

Please put your child's name on all possessions.