

# Plants

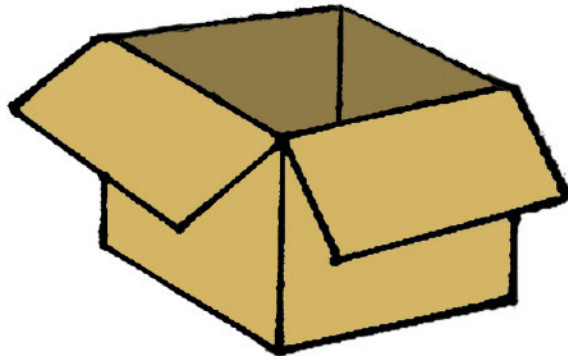
I can't see the plant moving!!

What waste products do plants excrete?

How are plants sensitive?  
I wouldn't want to upset its feelings!

I remember that plants feed on water, minerals in the soil and  $\text{CO}_2$ !

Movement  
Reproduction  
Sensitivity  
Nutrition  
Excretion  
Respiration  
Growth





# The Flower

**Important:** colour all parts before cutting them out.

**Top cover:** colour the petals blue and the sepals and stalk green

**Petals:** colour these blue

**Stalks and sepals:** colour these green

**Anthers:** colour these red

**Filaments:** colour these brown

**Stigma:** colour this orange

**Style + ovary:** colour this green and colour the upside down 'C' brown

## Making the model

1. Cut out the stalk (including the parts outlined by dotted lines) and stick it on your page in the centre, about two thirds of the way down the page.
2. Cut out the petal '1' and stick it on top of the stalk in the centre.
3. Cut out petal '2' and stick it on the left of the stalk positioning it by using the dotted lines on petal '1'. Cut out petal '3' and stick it on the right of the stalk.
4. Cut out the sepals. Glue only about half cm of the blunt ends. Stick sepal 'a' to the left of the stalk below the petals and sepal 'b' to the right of the stalk. Bend the ends upwards so they will stand out.
5. Cut out the stigma, style and ovary part of the model. Glue just the base of the ovary and stick it on top of the stalk in the centre. Bend the style upwards so that it will stand out.
6. Cut out the filaments and the anthers. Glue only the bottom of the filaments and stick them onto the stalk, two on each side of the ovary and evenly spaced. Again bend the filaments upwards so that they will stand out.
7. Cut out the top cover. Glue it at the base where the dotted lines are and then stick it down on the model. Do not worry if the top petals do not exactly cover the bottom petals. Bend the petals to make them stand out slightly.

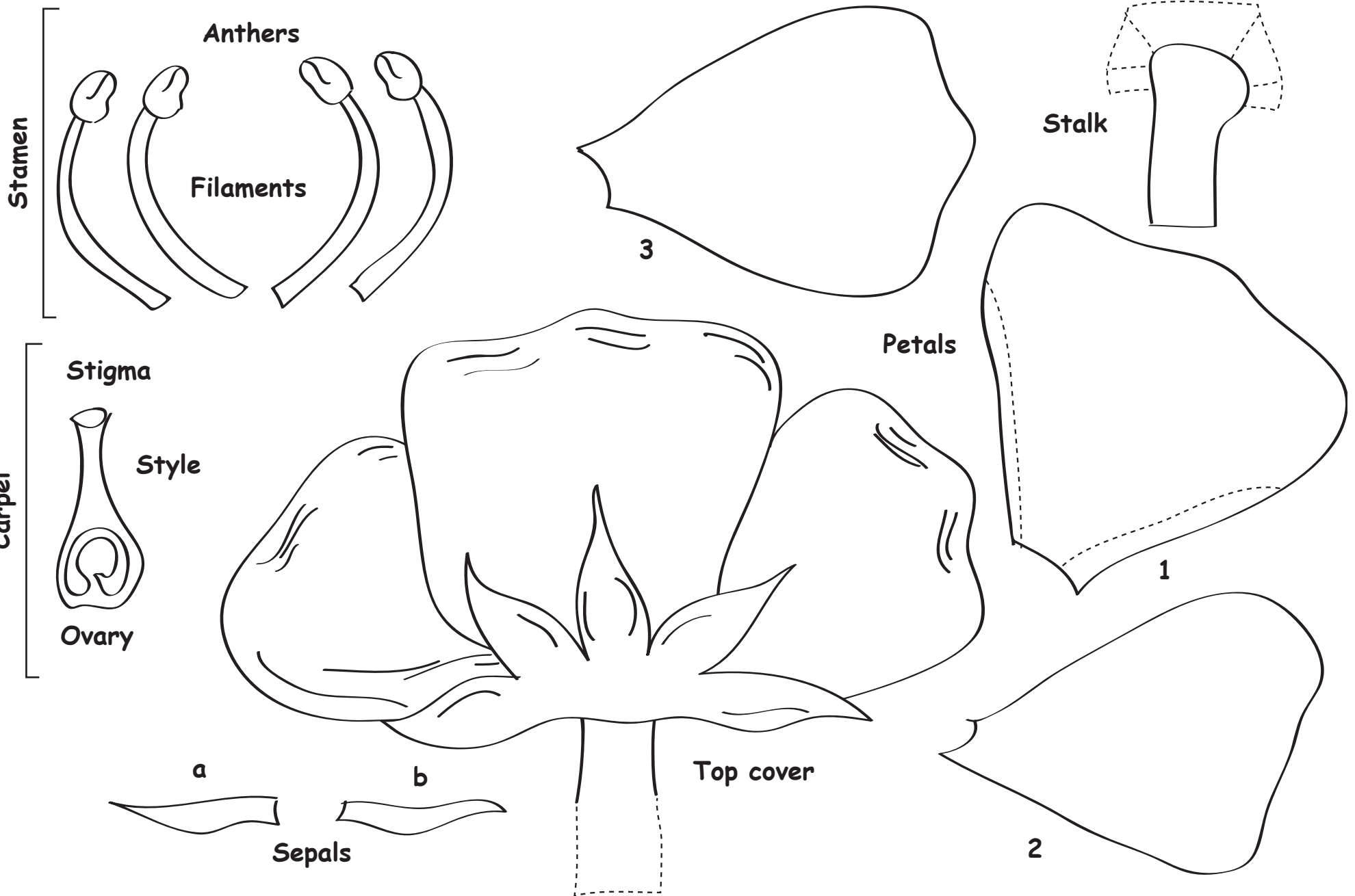
**Label the following parts:**

Petal	Sepal	Stalk	Anther	Carpel
Filament	Stamen	Stigma	Style	Ovary

**Finally give the model a title.**

# Flower

Important: colour all parts before cutting them out.



# Flower

