The background features a white circle on the right side, containing text. The rest of the background is orange with various yellow geometric shapes: a large solid circle, a dashed vertical line, a solid square, a dashed diagonal line, a solid triangle, and a solid circle in the top right corner.

Art Curriculum
Self Portraits of
Class 4 in the Style
of Paul Klee

WB-13.7.20

Wednesday 15th
July:

Find out here
about about
Paul Klee.

Abstract Artist Fact Sheet

Paul Klee
1879 - 1940



Paul Klee was born in Switzerland in 1879. His father was a music teacher and his mother was a singer. As a child, Paul Klee was a very talented violin player and his parents wanted him to be a musician. However, he felt that classical music was too old fashioned for him to express his feelings. When he was 17, Klee enrolled into the Academy of Fine Arts in Munich. His parents were disappointed.

Paul Klee studied hard and got a Degree in Fine Arts. He travelled in Italy to see the famous paintings of the Renaissance. All the time, he was worried that he wasn't good enough at painting because he couldn't make his pictures look realistic. He experimented with lots of different kinds of art work, such as etchings and drawing on glass.

As a young man Klee worked mainly as a graphic designer and illustrator. He became close friends with the rising artist Wassily Kandinsky who encouraged him to experiment with new painting styles. When Klee visited Tunisia in North Africa in 1914, he was inspired by the landscape and the simple shapes and patterns of African art. Finally he felt free to paint in a way that allowed him to express himself clearly.



Klee spent five years as a soldier in WWI. Throughout this time, he continued to practice his painting and develop his new style. After the war, his new works became very popular and he became very busy creating and exhibiting his art. He also taught at the famous German art school, the Bauhaus.

Over his life Klee created over 10 000 works of art using many different materials. In 1939 he created over 1 200 works. This is more than 3 per day! He died in 1940, one of the most famous painters of his day.

Work: *Flower Myth*, 1918

Look at the following picture by Paul Klee. Look at his use of lines and colour. Can you recreate a similar picture? How does the title to this piece of art link to it?



Castle and sun 1928

Wednesday 15th July

Look at the 4 following pictures by the artist Paul Klee. Create a mindmap of ideas

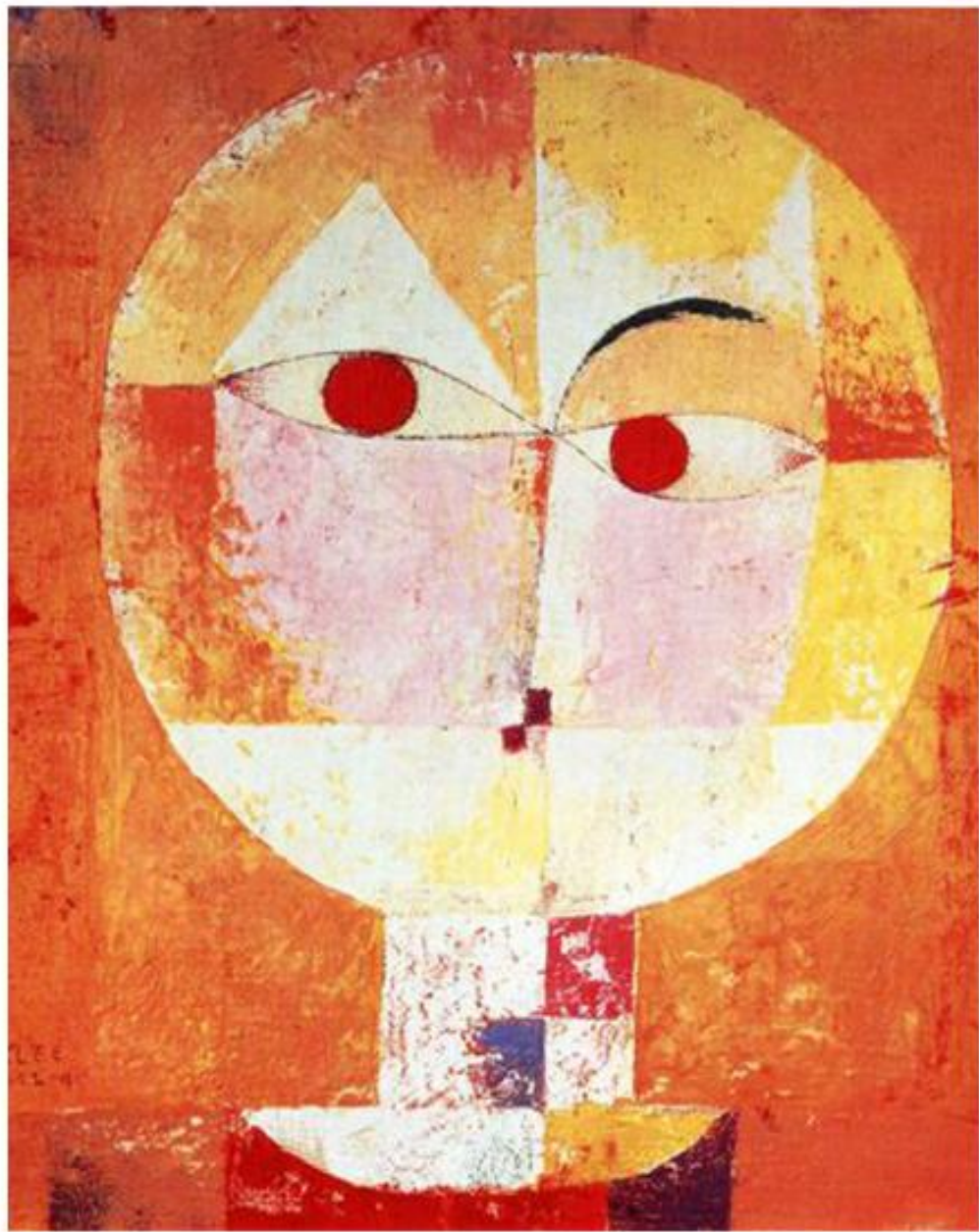
- What does he draw?
- How does he use colour?
- What medium (paint etc) could he be using?
- What types of lines does he use?



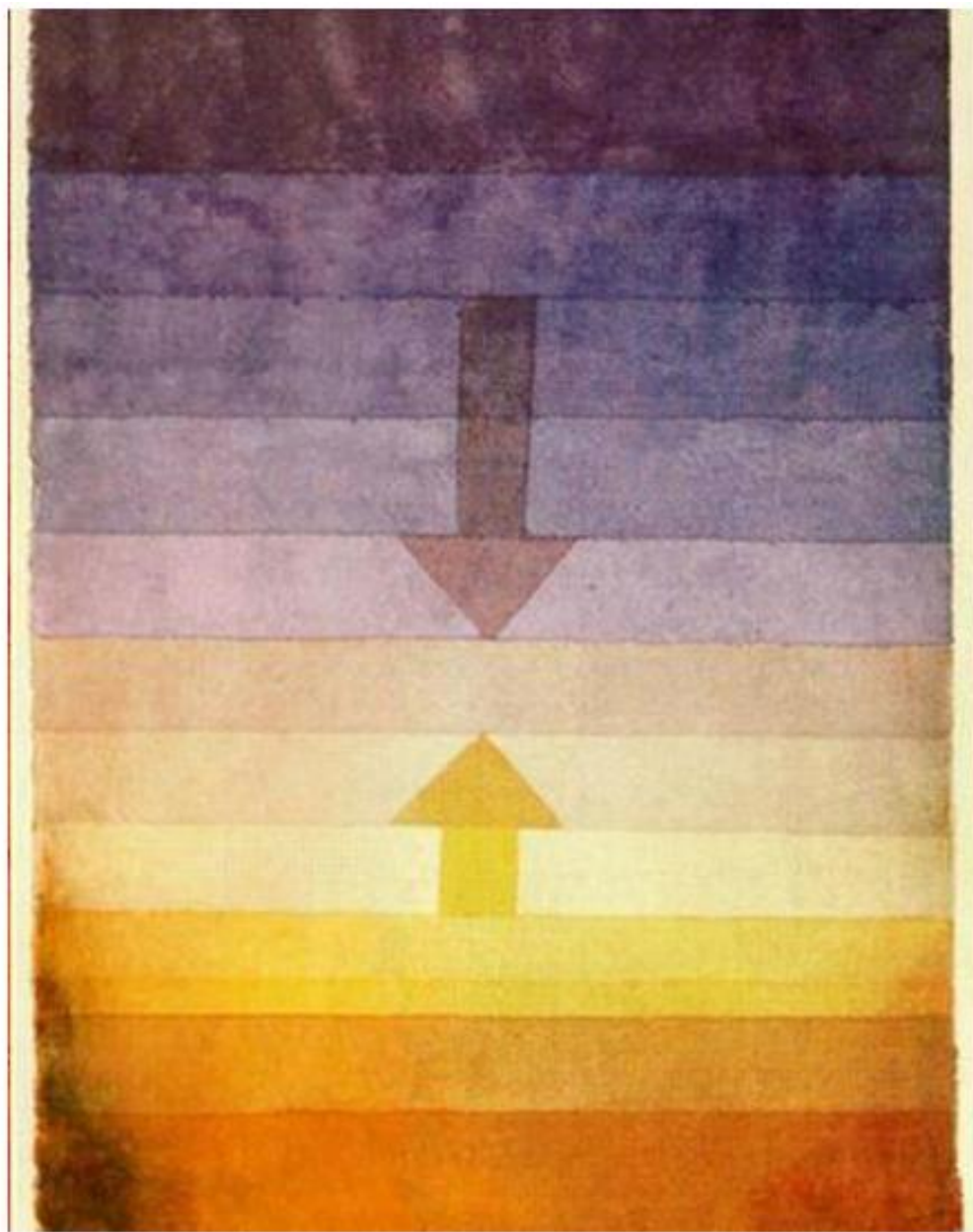
Introducing the Miracle
1916



Moonrise and Sunset
1919



Senecio
1922



Separation in the Evening
1922

- Wednesday 15th July
- Can you create your own image inspired by Paul Klee?
- Ideas on next slide
- Step 1: Decide on your image
- Step 2: Draw image
- Step 3: Using a ruler add straight lines across the image
- Step 4: Add different colours, tones and shades to each section



