

Design Your Adapted Nessie:



Now, your task is to 'design', draw, colour and label what you think the Loch Ness monster should really look like if it has adapted perfectly to living unseen in Loch Ness for thousands of years.

As scientists, we know that it may take millions of years for an animal to evolve into something quite different to that which it started out as, but we are going to speed up Nessie's evolution and adaptation for this task.



Would such a monster so clever at staying unseen really look like this?

Lets suppose Nessie was originally some kind of water dwelling dinosaur when first got trapped in the Loch, which was formed about 10,000 years ago (although Loch Ness is connected to the sea by rivers and streams).

You must do some research about Loch Ness and take into account the following issues which will affect how your monster is 'designed'. Label parts of your monster to show it's physical adaptations - it's features, colour, type of body, what it uses to move in the water etc.

Also make notes around your picture about how it's adaptations help it survive, it's behaviours, it's diet, when it is most active, and how it's adaptations allow it to be unseen.

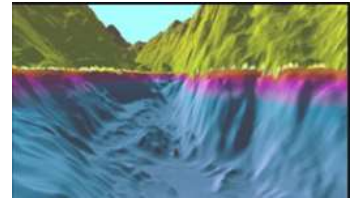
Criteria to Take into Account

a. Food Supply in the Loch:

- What other animals and plants live in the Loch as a food source: this will affect the monster's method of eating and consequently its physical makeup (e.g. does it need sharp, tearing teeth or flat grazing teeth, does it need to swim fast, and is it a predator?)

b.: Conditions in Loch Ness:

- Temperature will affect the type of skin, scales, or coat the monster will have evolved.
- How deep the water is will affect its swimming ability, and whether it has gills to breathe underwater, or is it a mammal which needs to come to the surface to breathe air like a whale?
- Its shelter/hiding place is important as it is able to stay unseen.
Are there caves in Loch Ness, or vegetation it can hide in, and if so, does it need a particular type of camouflage?



c. Its ability to remain unseen by humans:

- How does it stay hidden?
Can it hear or sense human activity on and out of the water?
How does it do this - what physical features and behavioural features does it have to help?

d. How have its senses evolved?:

- How does it see - does it have large eyes to see in dark conditions or at night (like a bush baby), or does it not have eyes like the salamander in the video?
- Have its other senses evolved to compensate: dolphins, and bats, for example, can use echolocation (like a radar) to 'see' things.
- Does it use its sense of hearing well - think about foxes in the video?

